



JK590C / JK590

履带式液压潜孔钻机

Crawler Hydraulic DTH Drilling Rig



一直致力于您
更好的钻凿感受

Always for your better drilling experience

JK590C / JK590 新一代内燃（电动）履带式液压潜孔钻机，为 JK590 的新一代升级版本，比上一代产品性能更优，进尺成本更低，设计更人性化。采用柴油发动机（电动机）—液压油泵组为动力装置，由液压马达实现钻机回转、推进、提升、行走及液压缸摆角定位等辅助动作，JK590C/JK590 钻机在钻孔作业时，只有潜孔冲击器消耗压缩空气。与全气动钻机比较，配套空气压缩机排气量减少 30%—50%，钻孔作业时能源（燃油或电量）消耗约 40%—50%。

JK590C 为 JK590 新一代加装环保液压除尘系统的型号，工地具备用水条件亦可选用湿式除尘系统。

JK590C / JK590 新一代内燃履带式液压潜孔钻机主要用于水电工程，露天采矿，道路修建，国防工程的钻凿爆破孔作业。

JK590C/JK590 New Generation Internal Combustion (Electric) Crawler Hydraulic DTH Drilling Rig is the update product of JK590, which possesses more improved function, more human-oriented design and lower drilling footage cost. It is equipped with diesel engine (electromotor) --- hydraulic oil pump unit as its drive device, and achieves the supporting movements such as rotation, propulsion, lifting, moving, pivotangle orientation of hydraulic oil cylinder through hydraulic motor. When the JK590C/JK590 is doing drilling works, only DTH impactor will consume the compressed air. Compared with whole-pneumatic drilling rig, the air displacement of matched air compressor is reduced by 30% to 50%, and the consumption of energy (fuel or electricity) is 40% to 50% during operation.

JK590 new generation, which additionally equipped with model of environmental friendly hydraulic dust removal system, constitutes JK590C. Drilling site meets the conditions of water can also adopt wet dust removal system.



★ 回转机 Turn-around machine

- 回转扭矩大，全新行星减速箱体比直齿型减速箱结构更紧凑，减速比大，扭矩传递效率更高运行更平稳，并不需要减震接头等附加部件进行减震，故障率更低，降低了日常维护成本，松散层不易卡钻，成孔率高。
- 进口回转密封件，密封性好、寿命长。
- 高分子衬板，耐磨、不需注油润滑，更方便。
- 锰钢机加导轨，架体坚固、导轨无磨损。
- Large rotary torque, the structure of newly designed planetary reduction box is more compact than that of straight-tooth type reducer with greater reduction ratio, more efficient torque moment transmission, and more smooth operation. It doesn't need additional parts such as damping joint for shock absorption. The failure rate is lower which reduced routine maintenance cost. The unconsolidated layer is not easily sticking, high pore-forming rate.
- The imported rotary sealing parts own excellent sealing and service life.
- Macromolecule liner is wearable and more convenient, no need for oil injection.
- Manganese steel machine equipped with sideway makes the frame structure firm, and the sideway free from abrasion.



★ 免维护推进机构 Maintenance-free propulsion mechanism

- 液压机械双重锁定，既保证液压马达的大扭矩稳定输出，使用寿命又比蜗轮蜗杆大大提高，机械锁定又杜绝液压内泄，防止下滑，二者结合，各取所长。
- 技术更先进，属于新一代产品，并不需要日常加油维护。
- Double locked hydraulic machinery not just guaranteed the stable high torque output of hydraulic motor, its service life also greatly extended compared with worm and gear. The mechanical lock completely eradicates internal leakage of hydraulic pressure, meanwhile prevents the glide, the combination of two factors guaranteed the performance on the largest scale.
- Belongs to a new generation of products, it applied more advanced technology, the propulsion mechanism doesn't need routine oil maintenance.



★ 免维护底盘 Maintenance-free chassis

- 原装进口行走马达，爬坡能力强，可牵引空压机。
- 双速行走系统，快速行走节省移位时间。
- 履带架浮动 15°，装配行走平衡系统，适于崎岖现场施工。
- 加强型工程机械履带、箱型结构履带架，坚固、耐用。
- 免维护支重轮，无需注油。
- 加装履带护板，防止履带脱轨。
- 可配置无动力解锁式行走马达。
- The originally imported walking motor possesses high gradeability to drive the air compressor.
- Dual-speed walking system can move quickly, which will save the time for displacement.
- The crawler frame floats within the range of 15°, equipped with walking balance system, it is applied to rough worksite.
- Enhanced engineering machinery crawler & box structure crawler frame are sturdy and durable.
- Maintenance-free thrust wheels, no need for oil injection.
- The caterpillar board is installed to prevent derailment of the caterpillar.
- Optional unpowered deblocking type moving motor



★ 操纵台 Control console



- 独立行走操作系统，金科钻机采用三档变位独立行走操纵台^①，视野更宽，操纵更安全，行走时和工作时采用不同的工作角度，适合工地的不同使用情况，设计更加安全化、人性化。
- 原装进口操纵阀，性能更可靠。
- 集中操纵台，便于钻机的各项操作控制。
- 快速推进及提升操作，减少辅助时间，提高工效。
- 推进力可调控制，根据钻进需要随时调节。

- Independent moving operating system, JK drilling rigs adopt three-gear-shifting independent moving control console with broader view and safer manipulation, which employs different working angles during moving and working.
- The originally imported operating valves possess more reliable performance.
- Centralized control console provides convenient operational control of drilling rig
- Fast propulsive and lifting operation reduce the auxiliary time and enhance the working efficiency
- The propulsive force can be adjusted and controlled according to the drilling needs



★ 动力装置 Drive device

- 原装进口液压油泵，耐压高，排量大，质量更可靠，寿命长。
- 玉柴70KW增压发动机（可选配康明斯），动力强劲，易维护保养。
- 两级空气滤清装置，确保发动机吸入洁净空气，安全可靠。
- 油水一体散热器，保证在高温环境下，发动机和液压系统正常工作。

- The originally imported hydraulic oil pump is characterized by the high voltage-resistance, large displacement, more reliable quality and long service life.
- Yuchai 70KW turbocharged engine (Cummins optional) is featured by the strong power and easy maintenance.
- Two-grade air filtering device ensures the engine to absorb the clean air, being safe and reliable.
- Oil-water integrated radiator ensures the normal operation of the engine and hydraulic system under the high-temperature environment.



★ 钻臂 Drilling arm

- 多角度、加长型功能钻臂，钻孔范围更广，可钻水平孔、前后倾角孔、侧向倾角孔，比同类钻机钻孔工作扇形面积多20%。

- Multi-angle elongate functional drilling arm drills larger scope, which can drill horizontal hole, forward and backward dip angle hole as well as the lateral dip angle hole. Compared with similar drilling rigs, its sectorial area of drilling work exceeds 20%.

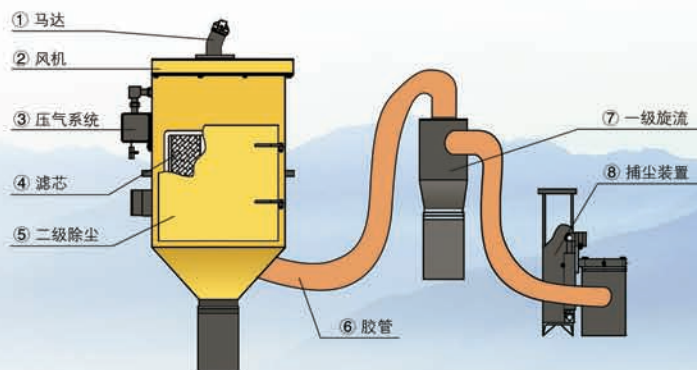


JKC系列环保液压干式除尘器

JKC series hydraulic dry dust collector

JKC系列液压干式除尘器是专门为金科系列露天潜孔钻机设计的配套产品。它有效的延长了钻机使用寿命、保证作业人员的身体健康、减少了粉尘污染、环保效果好。

JKC系列除尘器是一种新型高效脉冲除尘器，收尘效率高、处理风量大、性能稳定、操作方便、清灰效果好、滤筒寿命长、维修工作量小等。在国内外除尘设备处于领先地位。



完善的售后服务

Consummate after service

高效的售后服务体系，金科钻孔提供钻机全系列的售后服务支持，新机免费现场安装、指导，全程售后热线支持及优惠价格提供配件。经过严格专业培训和上岗认证的金科专业维修人员都将在第一时间出现在您的面前。他们非常熟识与了解设备和用户的问题。因此，无论何时，无论何地，无论您面临如何棘手的问题，他们都能快捷、热情、稳妥地解决问题。



前期钻孔方案制定



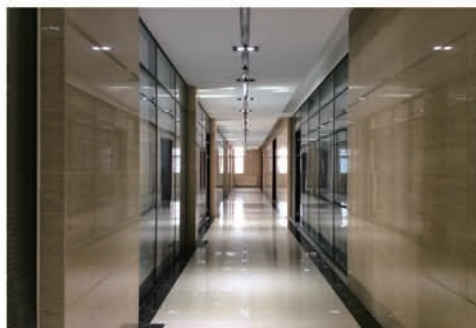
选择金科钻孔



质量求生存 服务求发展
服务热线: +86 0313 3883554

全程顾问式服务系统

一直致力于您更好的钻凿感受



JK590C履带式液压潜孔钻机技术参数与规格

JK590C Crawler Hydraulic DTH Drilling Rig Technical specifications

钻孔直径 / Drilling diameter	Φ90-Φ165mm		
钻孔深度 / Driling depth	50m		
换杆长度 / Pipe-rod changing length	3m		
钻臂最大水平摆角 / Maximum horizontal angle of drilling arm	左右各45° left and right 45°		
滑架最大倾角 / Maximum inclinable angle of sliding framework	180°		
工作风压 / Working air pressure	2.5Mpa		
回转机转速 / Speed of turn-around machine	0-80 RPM		
回转扭矩 / Rotary torque	3000 N · m		
滑架行程 / Sliding framework stoke	4138 mm		
最大水平凿岩高度 / Maximum horizontal drilling height	3.37 m		
适应岩石硬度 / Applicable rock hardness	f=6-20		
走行速度(双速) / Moving speed(dual-speed)	2km/h、3km/h		
爬坡能力 / Gradeability	30°		
动力 / Engine	柴动Yuchai 电动Electric	70KW 45KW	康明斯Cummins 74KW
外形尺寸（长×宽×高） / Overall dimension(length ×width× height)	7000×2200×2100(运输状态) (transportation state)		
重量 / Weight	6500kg		
除尘器 / Dedusting method			
型号 / Model	JKC系列		
清灰方式 / Soot cleaning mode	脉冲反吹风 Impulse reverse wind		
滤芯材质 / Filter material	聚酯滤料 Polyester filter material		
选 配 / Optional	全液压干式除尘 Hydraulic dry dust collector 湿式专用除尘 Wet type special dust removal		

INTRODUCE | 公司简介 |



金科钻孔机械有限公司是专业研发、生产各种潜孔钻机的大型企业。现主要的产品有：JK730、JK610、JK590、JK520、CM458 (D)、CM358A、CL351等系列潜孔钻机；JKS200系列、JKS300系列、JKS400系列、JKS500系列、JKS600系列、JKS800系列、JKS1200系列、车载水井钻机等冲击式水井钻机。潜孔钻机广泛用于大、中、小型矿山、水电、交通、国防工程等土石方挖掘爆破工程，也可用于港口航道等水下岩石钻孔爆破作业。冲击式水井钻机广泛用于开凿水井、地温空调钻孔等大孔径、深孔作业。公司设有完善的售后服务和维修网络为客户提供强大的销售支持，产品深受国内外客户青睐。

在专业的钻机机械领域中，金科公司始终做为创新者，致力于为广大客户提供高品质，高新技术的产品。金科拥有自己的新产品研发中心，可以研制、生产先进、新型、高品质、低能耗的各种型号钻孔机械，全面通过ISO9001质量管理体系认证。金科公司座落于“中国钻机之乡”——宣化，这里交通便利，东临北京，西连晋蒙、宣大、京张、丹拉高速公路在这里交汇，京包铁路穿境而过，110、117、207国道广连全国，距首都机场仅150公里。金科公司近年的销量连年快速增长，其主导产品全系列履带式液压潜孔钻机市场占有率达到同类产品的60%以上。相知无远近，万里尚为邻，金科公司愿与您携手共创辉煌。

JK drilling is engaged in designing and manufacturing of various kinds of DTH drills. The main categories include down-the-hole drill series models JK730, JK610, JK590, JK520, CM458 (D), CM358A, CL351 etc; as well as impact type well drill series models JKS200 series, JKS300 series, JKS400 series, JKS500 series, JKS600 series, JKS800 series, JKS1200 series, etc. JK down-the-hole drill is applied to earth-rock blasting engineering in large and medium-sized mine, national defense engineering, as well as underwater rock drill blasting work of harbor channel etc; JK Well drill is applied to large aperture and deep-hole work in drilling wells, geothermal air-conditioning drilling etc.

张家口市宣化金科钻孔机械有限公司

地址：河北宣化开发区钟楼大街142号

电话：0313-3046888 3046868

传真：0313-3046358

Http://www.jkzk.com

E-mail:xhjkzk@126.com

Zhangjiakou Xuanhua Jinke Drilling Machinery Co., Ltd

Address: No. 142, Zhonglou street, xuanhua, Hebei, China

Telephone: 0313-3046888 3046868

Fax: 0313-3046358

Http://www.jkzk.com

E-mail:xhjkzk@126.com



请关注金科钻机官方微信