

# JK810-3 一体式全液压潜孔钻机

HYDRAULIC CRAWLER MOUNTED  
DTH DRILLING RIG

**JK** 金科钻孔  
[www.jkzk.com](http://www.jkzk.com)

*Atlas Copco* Inside



# JK810-3 一体式液压潜孔钻机

HYDRAULIC CRAWLER MOUNTED  
DTH DRILLING RIG

JK810-3一体式全液压潜孔钻机是一款可以为您带来更高自动化、更高钻进效率的产品，运行可靠，操作简单。标配有满足FOPS要求的驾驶室和自动换杆系统，加宽重型行走机构，在满足快速移动的同时兼顾更好的安全性，液压除尘系统可满足矿山新的环保要求，是现代绿色矿山开采的可靠解决方案。

JK810-3 is an All-In-One hydraulic DTH drilling rig, which brings you more automation, higher working efficiency, better reliability and simpler operation. The FOPS-approved cabin and automatic pipe handling system come standard. Heavy-duty undercarriage with wide tracks ensures both extreme maneuverability and improved safety. The hydraulic dust collecting system meets new environmental protection regulations and it's a reliable solution to realize the modern green mining.

## 金科钻孔与阿特拉斯 一体化解决方案的代表之作

### 主要系统/部件 Main configurations



#### 滑架系统 Feeding system

采用不锈钢耐磨套保护特殊压制铝合金推进梁和双摆线马达回转装置，回转扭矩大、不容易卡钻，在确保钻机操作轻便灵活的基础上实现大孔径作业。同时可以根据不同岩层调节回转速度。进口回转密封件，密封性好、寿命长。

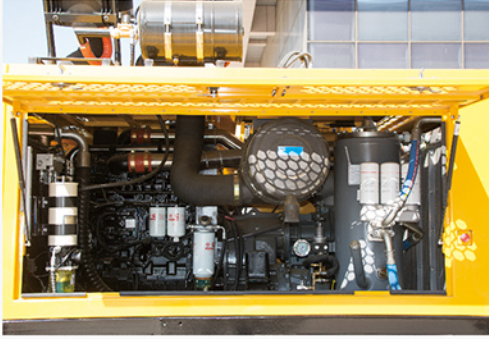
The aluminum alloy feed is made of special material and has the protection ability of stainless steel wear-resistant sleeve. The double cycloid motor slewing device has large rotating torque and is not easy to jam. It can realize big hole drilling operation on the basis of ensuring the ease and flexibility of the rig. At the same time, the rotation speed can be adjusted according to different rock formations. Imported rotary seals have good sealing performance and long service life.



#### 自动接卸杆系统 Automatic pipe handling system

储杆和自动接卸杆的功能操作简单，采用单个手柄就可以实现接杆、收杆、机械手开合以及钻杆倒库的全部动作。接卸杆采用上下夹紧的方式便于松开钻杆接头，提高了工作效率。可实现一键换杆，快捷安全。

All the functions, such as pipe storage, pipe loading and unloading, movement of the mechanical clamps, can be controlled very easily with one single joystick. Loading and unloading of the drill pipes are easily achieved by upper and lower clamping, greatly raising the working efficiency. Installing one-button automatic rod exchange system, faster and safer



## 空压机 Air compressor

采用阿特拉斯原装两级压缩机系统，可提供高压气体强劲输出，性能可靠，适合于各种硬度岩石，实现更快进尺游刃有余。

The high-output Atlas Copco air compressor features two stages of compression, delivering pressure. Powerful and reliable, it suits rock formations of various hardness and offers high penetrate rate with ease.



## 发动机 Engine

采用国III排放标准电喷涡轮增压水冷发动机，功率强大、省油；三级空气过滤系统保障入气清洁，大大降低发动机故障率。

The water-cooled EFI turbo engine offers more power, consumes less fuel and complies with the National III emission standard. The III stage air filter system ensures intake of clean air and greatly reduces the engine failure rate.

一直致力于  
您更好的钻凿感受

ALWAYS FOR YOUR BETTER DRILLING FEELING

### 维护保养

维护保养便利，保养点和检查点触手可及，发动机舱布局合理，多个机罩门开合方便，使得保养和服务十分便捷。

### 钻杆自动润滑系统

### 自动冲洗空滤系统





## ■ 操纵台 Control panel

操纵阀采用先导液控操作系统，操作灵活，性能可靠，维修简单，便于钻机的各项操作控制。快速推进及提升操作，减少辅助时间，提高工效。推进力可调控制，根据钻进需要随时调节。

The control valve adopts a pilot hydraulic control operating system, which is flexible in operation, reliable in performance, and simple in maintenance, which is convenient for various operation and control of the rig. Fast feeding and lifting decrease auxiliary time and increase working efficiency. Feeding force can be adjusted anytime if needed.



## ■ 驾驶室 Cabin

全封闭驾驶室配置带冷暖空调，FOPS达到欧美劳动保护标准。

全方位安全玻璃宽广清晰，使得驾驶者对各个角度准确掌控。

The sealed air-conditioned cabin is made with FOPS which meets EU and US safety protection standards. The all-around large safety windows offer great visibility and help the operator control the rig precisely from all angles.



## ■ 操作系统 Control system

操作系统简洁友好，易于上手。钻机的工作运行参数、提示、报警功能集中在仪表台上，便于操作者观察，各项数据一目了然。钻机的开孔角度，空压机的运行参数实时显示，方便操作者准确布孔，掌控全局。

The simple and friendly control system is easy to use. The drilling and operating parameters, prompts and alarm functions of the rig are concentrated on the dashboard, and each data is clear at a glance, which is convenient for the operator to observe. The drilling angle of the rig and the operating parameters of the air compressor are displayed in real time, which is convenient for the operator to accurately arrange the holes and control the overall situation.



## ■ 除尘系统

高效全液压除尘器，带有滑动式捕尘罩。收尘效率高，性能稳定，有效的延长了钻机的使用寿命，保证作业人员的身体健康，环保效果好。

The efficient hydraulic dust collector is equipped with a sliding dust cover. It boasts high dust collecting efficiency and stable performance, extends the rig's service life and ensures a clean working environment for the operators.



## ■ 底盘

采用工程机械四轮一带底盘，结构强度高，加宽履带行走平稳，爬坡能力强，凿岩作业时更加平稳。

浮动式车架，前后浮动 $\pm 10^\circ$ 。行走高低双速可调，工地间转移快捷。

超过400mm的离地间距，满足各种严苛路面通过要求，减少底盘碰撞可能。

The heavy-duty undercarriage features robust structural strength, wide tracks and excellent grade ability, which all ensure better stability while drilling.

The undercarriage can oscillate  $\pm 10^\circ$  back and forth, featuring adjustable dual speed and fast maneuverability between sites.

The high ground clearance of over 400mm suits varieties of tough terrain and minimizes the possibility of collision with ground.

# 更低的价格, 更高的配置

## JK810-3颠覆您的想象

### 技术参数 Technical specifications

车体规格 General			
总质量	Weight	kg	18000
全长	Length	mm	9920
全宽	Width	mm	2700
全高	Height	mm	3300
钻杆储杆器 Drill pipe changer			
钻孔直径	Drilling diameter	mm	Φ90-Φ165
钻孔深度	Drilling depth	m	28
钻杆直径	Pipe diameter	mm	Φ76 / Φ89
钻杆长度	Pipe length	m	4
储杆能力	Pipe capacity	支 / Piece	6+1
冲击器规格	Hammer specs	"	4" - 5"
空压机 Air compressor			
Atlas Copco 2级螺杆空压机	Atlas Copco two-stage rotary screw air compressor		
压力	Working pressure	bar	20
最大输出流量	Max. FAD	m <sup>3</sup> /min	19.8
推进梁 Feed			
推进行程	Feeding stroke	mm	4750
推进补偿	Feed extension	mm	1100
发动机 Engine			
型号	Model	QSL8.9-C360-30	
形式	Type	水冷6缸电喷柴油机 Water-cooled six-cylinder EFI diesel engine	
额定功率	Rated power	kw/rpm	264/2100
燃油箱容量	Fuel tank capacity	L	600
回转马达 Rotary motor			
回转速度	Rotation rate	rpm	0-160
最大扭矩	Max. rotation torque	Nm	3300
推进方式	Feeding method	马达驱动+链轮链条式 Hydraulic motor + Chain	
推进力	Feeding force	KN	12
提升力	Lifting force	KN	18
底盘 Undercarriage			
履带宽	Track width	mm	350
离地间隙	Ground clearance	mm	≥400
履带架摆动角度	Track oscillation	°	±10
行走速度	Walking speed	km/h	2.2 / 3.5
爬坡能力	Grade ability	°	20
集尘器 Dust collector			
除尘方式	Collecting method	全液压除尘 Hydraulic dust collecting	

## About us | 公司简介 |



金科公司是专业研发、生产各种潜孔钻机的大型企业。现主要的产品有：潜孔钻机、多功能水井钻机、车载水井钻机等系列冲击式水井钻机。潜孔钻机广泛用于大、中、小型矿山、水电、交通、国防工程等土石方挖掘爆破工程，也可用于港口航道等水下岩石钻孔爆破作业。冲击式水井钻机广泛用于开凿水井、地温空调钻孔等大孔径、深孔作业。公司设有完善的售后服务和维修网络为客户提供强大的销售支持，产品深受国内外客户青睐。

在专业的钻机机械领域中，金科公司始终做为创新者，致力于为广大客户提供高品质，高新技术的产品。金科拥有自己的新产品研发中心，可以研制、生产先进、新型、高品质、低能耗的各种型号钻孔机械，全面通过ISO9001质量管理体系认证。金科公司座落于“中国钻机之乡”——宣化，这里交通便利，东临北京，西连晋蒙、宣大、京张、丹拉高速公路在这里交汇，京包铁路穿境而过，110、117、207国道广连全国，距首都机场仅150公里。金科公司近年的销量连年快速增长，其主导产品全系列履带式液压潜孔钻机市场占有率达到同类产品的60%以上。相知无远近，万里尚为邻，金科公司愿与您携手共创辉煌。

Zhangjiakou Xuanhua Jinke Drilling Machinery Co.,Ltd (JK Drilling) is a Chinese leading manufacturer of innovative drilling equipments including DTH blasthole drilling rigs, truck mounted drill rig and well drilling rigs, which are used for open-pit mining, quarrying, construction, deep well drilling of various purpose and other applications. Through its sophisticated network of aftersales service, JK Drilling provides the customers with fast and premium support to keep their equipment free of trouble. The products of JK Drilling have been well received by customers from domestic and abroad markets.

张家口市宣化金科钻孔机械有限公司

地址：河北宣化开发区钟楼大街142号

电话：0313-3046888 3046868

传真：0313-3046358

Http://www.jkzk.com

E-mail:xhjkzk@126.com

Zhangjiakou Xuanhua Jinke Drilling Machinery Co.,Ltd

Address: No.142, Zhonglou street, Xuanhua, Hebei, China

Telephone: 0313-3046888 3046868

Fax: 0313-3046358

Http://www.jkzk.com

E-mail:xhjkzk@126.com

**JK** 金科钻孔  
www.jkzk.com



扫一扫关注 金科钻孔 公众号