

# JKCS600 Truck Mounted Water Well Drilling Rig



## Introduction

JKCS600 Multi-functional truck mounted water well drilling rig is a efficient, multi-function full hydraulic water well drilling rig. It is high efficiency because of having a larger torque of the turntable and is mainly used for water well in industry and agriculture, national defense building foundation, geological exploration, geothermic well and other foundation working, it is popular at home and abroad.

JKCS600 truck mounted drilling rig can drilling in all kinds formations by mud drilling in soft formation and air DTH hammer in rock drilling, DTH Hammer is applied in rock drilling, slag is discharged by air pressure and the offstage efficiency is ten times than traditional rotary drilling.

JKCS600 deep water well drilling rigs, in cutting drilling or rotary drilling can be operated in unconsolidated layer, and the slag can be discharged under by mud, the impact drilling operation can also be adopted and slag can be discharged by pressure air, the hydraulic water well drilling rig suitable for drilling complicated geological conditions.

## Characteristics

1. The drilling rig can use air DTH Hammer drilling and mud drilling.
2. Centralized control console is suitable for each manipulation and control. Rapid pulling and lifting reduce the auxiliary time and enhance the work efficiency.
3. The truck chassis adopts the 8X4 special crane chassis of brand Sinotruck Howo and the main drive system, the transfer case, gearbox, double-winch unit, mud pump, turntable, drilling tower, feed system are set up on the chassis.
4. It's a hydraulic rotary drilling rig with directional circulation. It is equipped with BW450/2A mud pump which adopts the slurry as the washing fluid and can drill on clay, sand and rock if it is equipped with suitable drilling bit.
5. The power of drilling rig comes from a Cummins engine, 132kw Cummins engine drives the large displacement high pressure plunger pump and it is characterized by powerful dynamic and stable performance.

6.The rotary head,have two gear,rotation speed is 0-80 and160rpm stepless adjustment and the rotary torque is 6500-13000Nm.

7.The pulling force can be regulated and controlled, which adapt the machine to deep hole drilling.

8.It can set up a generator which is convenient to welding or illuminate for work at night.

9.Main winch are available on the rig so it is high efficiency when the rig drill on mud rock and on the weathering formation.

10.The main drive of rig is hydraulic and the four landing legs and drilling tower are hydraulic controlled. Transfer case and mud pump clutch system are also hydraulic operated.

11.The tools winch winch is used for auxiliary lifting and casing,optional main winch force of 4T, rope length of 100m and 8m lifting height.

12.The Hydraulic auxiliary functions are easy and efficient for guide extension, boom swing, boom lift, guide dumping.

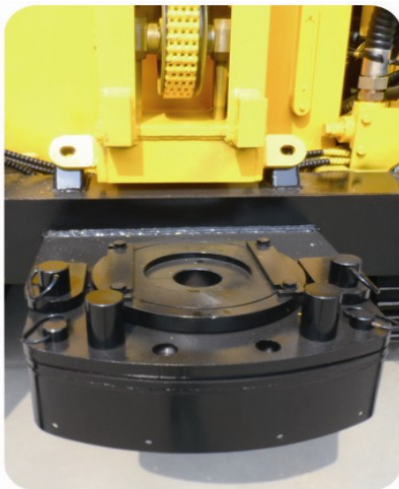
13.Competitive in price, low cost of maintain.

## Specification

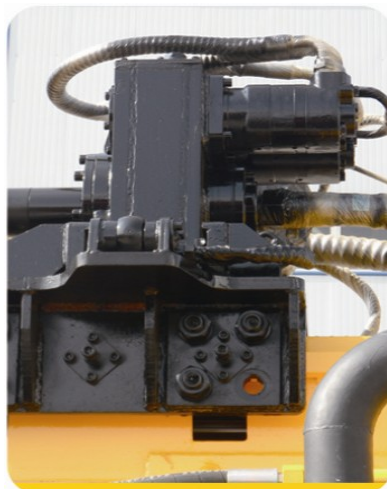
1	Geology drilled		All kinds
2	Drilling Type		DTH & Mud Rotary
3	Drill system and operation		Hydraulic
4	Hole Diameter	mm	Φ140—Φ450
5	Hole Depth	m	600
6	Rotation Torque	Nm	6500 1st Gear
			13000 2nd Ger
7	Rotation Speed	rpm	0-80 1st Gear
			0-160 2nd Ger
8	Drill pipe diameter	mm	89/114
9	Drill pipe length	mm	4000/4500
10	Axial pressure	T	10
<b>Winch</b>			
11	Max. Lifting force	T	32
12	Lifting force of Main winch(Optional)	T	4
13	Lifting force of hoist	T	1.5
14	Length of steel wire rope(tool winch)	m	100
15	Lifting height of tool winch	m	8
<b>Engine</b>			
16	Diesel Engine type	CUMMINS	
17	Rated Horse power	Kw	132
18	Electrical System	24	Volt
<b>Compressor required</b>			
19	Compressor Type	Rotary Screw/Movable	
20	Pressure Required	Mpa	1.05—6.9
21	Air consumption	m <sup>3</sup> /min	16—96
<b>Truck</b>			
22	Manufacturer	SINOTRUCK HOWO	
23	Model	ZZ1257M5841W	
24	Engine	WD615.62	
25	Rated Horse power	kw	196
26	Discharge Standard	EU-2	
27	Drive type	2*8	
28	Max.Speed	Km/h	102.9
29	Steering wheel	left/right(Optional)	
<b>Mud Pump</b>			
30	Type	Hydraulic	
31	Model	BW450	

32	Stroke	mm	110
33	Displacement	L/Min	450
34	Discharge pressure (Mpa)	Mpa	2-3
35	Suction tube diameter	mm	89
36	Discharge pipe diameter	mm	51
37	Liner Diameter	mm	80
<b>Hydraulic Welder</b>			
38	Mnufacturer		Dynaset
39	Welding current	A	60-250
40	Hydraulic Min.oilflow	L/min	42
41	Nom/Max Pressure	Bar	190/210
42	Voltage	V	110/220VDC
43	Power	Kw	1or2
44	L*W*H	mm	390*190*230
45	Foam pump		Optional
<b>Generator</b>			
46	Generator		Optional
<b>Dimension</b>			
46	Net Weight	T	22
47	Shipping Length	mm	10500
48	Shipping Width	mm	2480
49	Shipping Height	mm	3650
50	Working size (L*W*H)	mm	11000*2480*7147

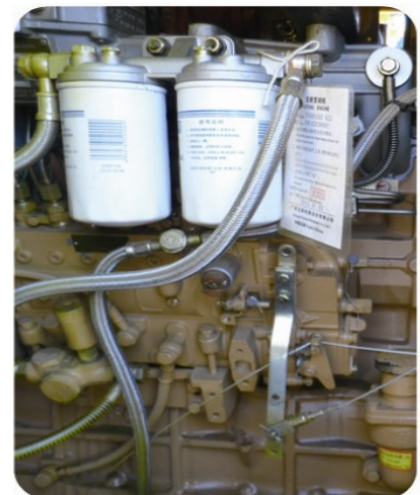
## Picture



**Centralizer**



**Rotary Head**



**Diesel Engine**



**Operation Panel**



**Winch**



**Truck**